

The NEAX[®] IPX^{DM}

The Promise Fulfilled



Technology that helps you work smarter, not harder.

Today's technology offers great potential. The NEAX IPX^{DM} is the promise fulfilled.

Take advantage of the benefits of peer-to-peer IP Telephony for your enterprise with the NEAX[®] IPX^{DM} (Internet Protocol Exchange-Distributed Model) while enjoying the many hundreds of PBX features you've come to expect from NEC.

What is Peer-to-Peer Switching?

"Peer-to-peer" switching means that the stations participating in a call are connected directly to each other through the IP network. The voice signals travel through the IP network but do not "go through" the switch as they do in traditional telephony. The fact that the NEAX IPX^{DM} can function in and support a "hybrid" network with traditional digital/analog switching, IP/TDM switching and pure peer-to-peer IP switching

means that users can continue to utilize their existing equipment while they phase in IP Telephony. This helps to lay the foundation for future networks.

Reduced Costs of Peer-to-Peer IP Connectivity

The NEAX IPX^{DM} retains all its features while offering significant potential cost savings associated with peer-to-peer IP Telephony such as:

Converged WAN Infrastructures –

Pay for service and maintenance of one network rather than two. By transporting voice signals across the Wide Area Network as IP packets, users can integrate their voice traffic with their data traffic.

Converged LAN Infrastructures –

Establish voice calls across the Ethernet Local Area Network utilizing the existing cabling plant and allowing single cable termination to the desktop.

Reduced Equipment Requirements –

In traditional TDM telephony, a single port is required for each station and each tie line connection. With IP connectivity, multiple calls are controlled through a single Ethernet port while voice travels directly between the user telephones. The NEAX IPX^{DM} reduces the need for circuit cards while minimizing the required system footprint.

Investment Protection

Even if you're not ready to deploy 100% IP Telephony immediately, the NEAX IPX^{DM} supports traditional circuit-switched telephony (Time Division Multiplexed) on both the trunk and line sides. This simultaneous compatibility allows users of NEAX systems to have the best of both worlds.



Functions Alone or in a Network

The NEAX IPX^{DM} functions as a standalone telephony system supporting both IP and traditional circuit switched connectivity. Yet it can also be seamlessly networked with other NEC telephony devices such as the NEAX 2400 IPX, NEAX IPS^{DM} and NEAX 2000 IPS units. NEAX IPX^{DM} supports node-to-node peer-to-peer connectivity.

The Bottom Line

The NEAX IPX^{DM} offers the full complement of traditional NEC PBX features while utilizing NEC's broad range of IP phone sets which have a multi-port switch built in, thereby enabling one-cable termination to the desktop. Furthermore, with NEC's current migration strategy, you can deploy IP Telephony today confident of a migration path to future technologies while protecting your current investment.

Shared Strengths – The Advantages of Integration

While other communications systems offer Voice over IP capability, the NEAX IPX^{DM} goes a few smart steps further. Our system not only transports voice over an Internet Protocol network, but also transmits call signaling information, as well. We call this "Telephony over IP." As a result, your networked sites can also share the same robust features and functions available on the NEAX IPX^{DM} located at your corporate headquarters. What's the bottom line? Employees across the entire enterprise benefit from the same set of communications tools — one company, shared capabilities — no matter where these users happen to be located.

Because the NEAX IPX^{DM} is built with an open and standards-based architecture, compatibility and interoperability with other broadband packet-based transmission media, such as ATM and Frame Relay, are ensured. From the desktop to the switch to the router to the edge, transport media can be shared, mixed and flexibly matched in a variety of ways.

The Promise of NEON

Migration with investment protection is the cornerstone of NEC's Enterprise Open Network (NEON). NEON embodies NEC's philosophy that drives development of complementary communication solutions for OPEN networks, delivering value-added capabilities and quality of service, while protecting investment; all without compromising the user experience.

NEAX IPX^{DM} Highlights

- Full complement of over 750 traditional NEC PBX features
- Intra-nodal (LAN) and inter-nodal (WAN) peer-to-peer IP connectivity
- Upgradeable from most prior versions of NEAX 2400
- Supports legacy TDM for digital and analog telephony
- Full-featured node-to-node FCCS and CCIS internetworking
- Supports full range of NEC IP telephone sets

Advantages

The advantages of this NEAX IPX^{DM}-based system include the following significant benefits:

- Enabling personnel with tools to increase responsiveness to customers thus providing a greater impact on

sales, service and revenue generation

- Enhancing business systems to improve the performance of deployed technologies

- Increasing the effectiveness of management resources

- Providing investment protection through product migration

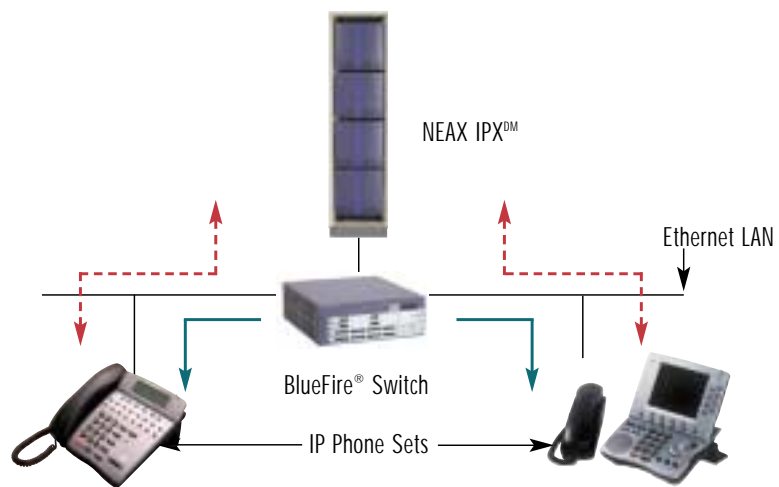
- Networking systems through IP transport for improving communications and information throughout your company

- IP Peer-to-Peer Connectivity

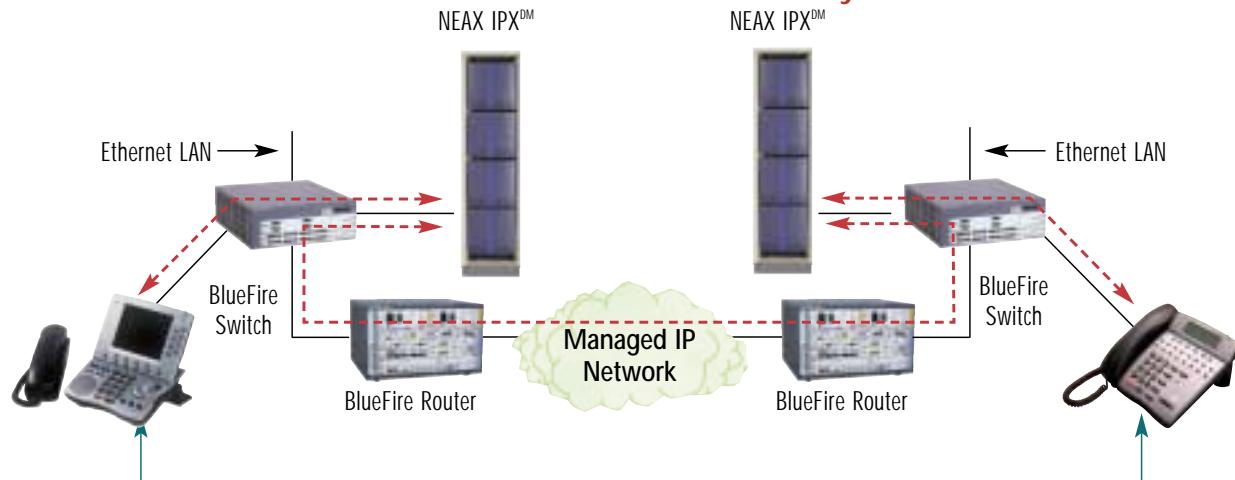
The NEAX IPX^{DM} unit assists in the call setup process and provides the full range of NEAX telephony features

Once the call is established, it is "carried" only by the network. The NEAX IPX^{DM} unit only "re-enters" when requested to provide a function such as conferencing in a third party

Node-to-Node Peer-to-Peer IP Connectivity In LAN



Node-to-Node Peer-to-Peer IP Connectivity Across WAN



*The NEAX IPX^{DM} was designed for deployment utilizing NEC BlueFire equipment as well as other vendors' routers and switches in an open standards environment.

